



# IMPs: The Ideal Treatment for Healthcare Facility Projects

---

Healthcare construction projects are growing at a rapid pace.

With a shift in patient delivery models, an aging population and a need to keep up with constantly evolving technology, healthcare facilities are faced with a significant need for both new construction and renovations.

In addition, approximately 150,000 healthcare practitioners are expected to enter the workforce in the next two years, resulting in an estimated need for over 225 million square feet of medical office space.

**Metl-Span® insulated metal panels (IMPs)** provide the resilient design and retrofit capabilities that are necessities in today's healthcare construction landscape – along with an ever-growing array of aesthetic options to set your next healthcare project apart.

## Metl-Span IMP Benefits

**Resilient Design** – The need for resilient design is as important as ever in the healthcare industry, as hospitals across the country have been hit hard by recent natural disasters. As leadership at various hospitals work to better position their facilities against the next hurricane, earthquake, fire or tornado, they need IMPs they can trust. With a Class 1 Polyurethane core and superior R-values, Metl-Span IMPs can withstand even the harshest elements in any environment.

**Retrofit Reliability** – 75 percent of recent healthcare construction projects were renovations, making fast building completion critically important. Metl-Span IMPs are lightweight, feature one-piece construction and can be installed in all climates to deliver accelerated installation times for your next retrofit project. Metl-Span IMPs also can be installed five times faster than brick construction.

**Aesthetic Importance** – Comfort and confidence are key factors in a patient's outlook, and that starts with a healthcare facility's exterior. Metl-Span IMPs come in an evolving array of color palettes and finishes to present a clean, crisp, sophisticated aesthetic to greet patients, families and healthcare professionals alike.

For more information on how Metl-Span insulated metal wall systems can impact your next healthcare project, visit [www.metlspan.com/markets/healthcare](http://www.metlspan.com/markets/healthcare). To discuss requirements and options for your next project, call **877.585.9969**.



## CF Architectural Horizontal

JOINT INTERSECTION

INTEGRATED WINDOW

REVEALS



PANEL PROFILE

### PRODUCT SPECIFICATIONS

**WIDTH:** 24", 30", 36"

**THICKNESS:** 2", 2.5", 3", 4"

**LENGTH:** 8'-0" TO 32'-0" for embossed  
8'-0" TO 16'-0" or unembossed

**EXTERIOR PROFILE:** Flat appearance providing a monolithic look, embossed or unembossed

**U-FACTOR<sup>1</sup> (BTU/h-ft<sup>2</sup>·F°)**

**PANEL WIDTH: 36"**

	75°
2"	0.0669
2.5"	0.0500
3"	0.0400
4"	0.0307

**R-VALUE<sup>1</sup> (h-ft<sup>2</sup>·F°/BTU)**

**PANEL WIDTH: 36"**

	75°
2"	14.95
2.5"	20.00
3"	25.00
4"	32.57

## Santa Fe

LOCK & GROOVE SYSTEM

PANEL

PANEL PROFILE

### PRODUCT SPECIFICATIONS

**WIDTH:** 24"<sup>3</sup>, 30"<sup>3</sup>, 36", 42"

**THICKNESS:** 2", 2.5", 2.75"<sup>3</sup>, 3", 4"

**LENGTH:** 8'-0" TO 32'-0" Santa Fe horizontal embossed  
8'-0" TO 40'-0" Santa Fe vertical embossed

**EXTERIOR PROFILE:** Flat profile with heavy embossing resembling old-world hand plaster

**U-FACTOR<sup>1</sup> (BTU/h-ft<sup>2</sup>·F°)**

**PANEL WIDTH: 42"**

	75°
2"	0.0669
2.5"	0.0500
2.75"	0.0450
3"	0.0400
4"	0.0307

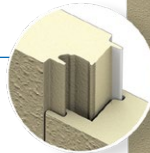
**R-VALUE<sup>1</sup> (h-ft<sup>2</sup>·F°/BTU)**

**PANEL WIDTH: 42"**

	75°
2"	14.95
2.5"	20.00
2.75"	22.50
3"	25.00
4"	32.57

## Tuff-Cast

LOCK & GROOVE SYSTEM



PANEL

PANEL PROFILE

### PRODUCT SPECIFICATIONS

**WIDTH:** 36", 42"

**THICKNESS:** 2", 2.5", 3", 4", 5"<sup>2</sup>, 6"<sup>2</sup>

**LENGTH:** 8'-0" TO 32'-0" for horizontal textured  
8'-0" TO 40'-0" for vertical textured

**EXTERIOR PROFILE:** Factory-applied Tuff Cote<sup>®</sup> system textured finish similar to precast concrete.

**U-FACTOR<sup>1</sup> (BTU/h-ft<sup>2</sup>·F°)**

**PANEL WIDTH: 42"**

	75°
2"	0.0669
2.5"	0.0500
3"	0.0400
4"	0.0307
5"	0.0264
6"	0.0224

**R-VALUE<sup>1</sup> (h-ft<sup>2</sup>·F°/BTU)**

**PANEL WIDTH: 42"**

	75°
2"	14.95
2.5"	20.00
3"	25.00
4"	32.57
5"	37.88
6"	44.64

## CF Striated

LOCK & GROOVE SYSTEM



PANEL

PANEL PROFILE

### PRODUCT SPECIFICATIONS

**WIDTH:** 24"<sup>3</sup>, 30", 36", 42"

**THICKNESS:** 2", 2.5", 2.75"<sup>3</sup>, 3", 4"

**LENGTH:** 8'-0" TO 32'-0" horizontal embossed  
8'-0" TO 16'-0" horizontal unembossed  
8'-0" TO 40'-0" for 24", 30" and 36" vertical embossed  
8'-0" TO 32'-0" for 42" vertical embossed  
8'-0" TO 16'-0" vertical unembossed

**EXTERIOR PROFILE:** Longitudinal striations, nominal 1/16" deep embossed or unembossed

**U-FACTOR<sup>1</sup> (BTU/h-ft<sup>2</sup>·F°)**

**PANEL WIDTH: 42"**

	75°
2"	0.0706
2.5"	0.0516
2.75"	0.0470
3"	0.0424
4"	0.0324

**R-VALUE<sup>1</sup> (h-ft<sup>2</sup>·F°/BTU)**

**PANEL WIDTH: 42"**

	75°
2"	14.16
2.5"	19.38
2.75"	21.28
3"	23.58
4"	30.86

<sup>1</sup>Based on ASTM C518, ASTM C1363 and thermal modeling, 75° F core mean temp. <sup>2</sup>5" and 6" CF Tuff-Cast and Tuff Wall available with Mesa, nominal 1/8" deep profile only.

<sup>3</sup>Available only from Nevada plant.

For more product specifications and additional profile options, visit [metlspan.com](http://metlspan.com).