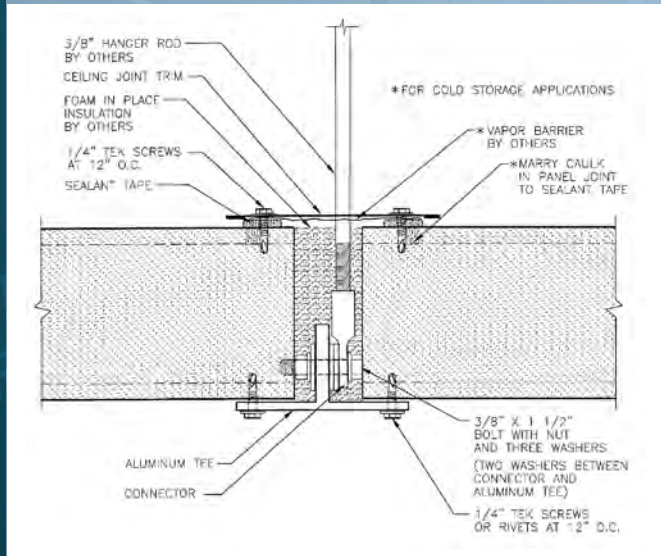
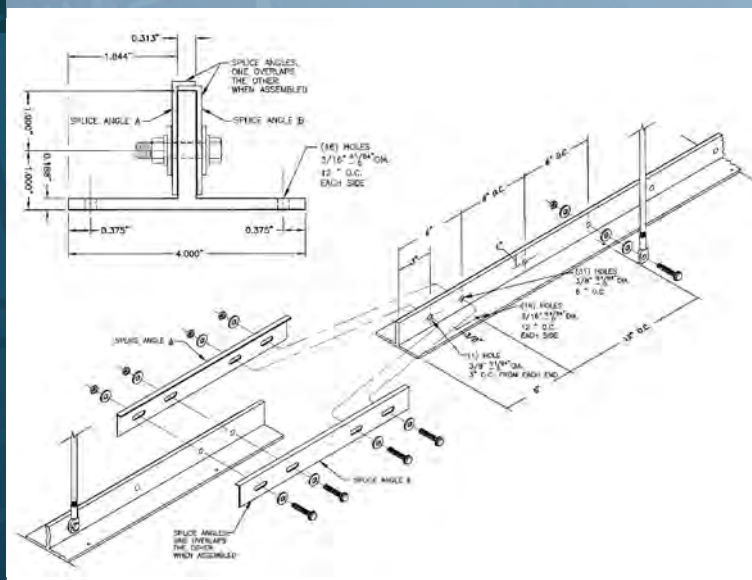


16'-0" LONG ALUMINUM TEE



CEILING BUTT JOINT WITH ALUMINUM TEE



ALUMINUM TEE WITH HANGER RODS AND SPlice ANGLE ASSEMBLY

## TUFF T - ALUMINUM CEILING SUPPORT T

The Metl-Span Tuff T aluminum support is a heavy extruded aluminum T-shape that is suspended from bar joists by hanger rods. The Tuff T aluminum support eliminates time-consuming field routing of insulated ceiling panels and the use of splines, which make it difficult to level a ceiling. Tuff T is quick to install and is fully engineered to provide maximum support spacing.

**Note:** Tuff T is only sold in combination with Metl-Span panels for use in approved ceiling support applications.

### TUFF T - ALUMINUM CEILING SUPPORT FEATURES

**Description:** 2" wide x 5/16" thick vertical leg and 4" wide x 3/16" horizontal leg. Pre-drilled holes in the vertical leg are spaced at 6" on center for attachment to hanger rods. Pre-drilled holes in the horizontal flange are spaced at 12" on center on both sides of the vertical leg for attachment of panels.

**Material:** Aluminum

**Length:** 16 ft.

**Finish:** Painted white

**Splice Plates:** Splice plates are supplied by Metl-Span in heavy brake-form steel to connect 16' sections of Tuff T together.

**Fastening:** Attachment to hanger rods is accomplished with a hanger rod connector, bolts and washers supplied by Metl-Span. Attachment of panels to the flange of the Tuff T is with tek screws or pop rivets.

METL-SPAN CEILING SUPPORT TUFF T - ALUMINUM CEILING SUPPORT T

**DESIGN TABLE FOR CEILING PANELS SUPPORTED BY ALUMINUM TEE SYSTEM\*  
ALLOWABLE DESIGN LOAD (PSF)**

Panel Thickness	Tee Support Span	Panel Span						
		8'	9'	10'	11'	12'	13'	14'
2"	5'	32.9	26.6	20.6	16.0	12.6	10.0	-
	6'	18.3	16.1	14.3	12.8	11.5	10.0	-
	7'	10.8	-	-	-	-	-	-
	8'	-	-	-	-	-	-	-
2-1/2"	5'	32.8	28.9	25.8	23.3	19.1	15.5	12.6
	6'	20.7	18.1	16.1	14.4	13.0	11.9	10.9
	7'	10.6	-	-	-	-	-	-
	8'	-	-	-	-	-	-	-
3"	5'	32.7	28.8	25.7	23.2	21.0	19.2	17.7
	6'	22.7	20.0	17.7	15.9	14.4	13.1	12.0
	7'	11.7	10.3	-	-	-	-	-
	8'	-	-	-	-	-	-	-
4"	5'	32.5	28.6	25.5	23.0	20.8	19.0	17.5
	6'	26.4	23.2	20.6	18.5	16.8	15.3	14.0
	7'	15.7	13.7	12.1	10.7	-	-	-
	8'	-	-	-	-	-	-	-
5"	5'	32.3	28.4	25.3	22.8	20.6	18.8	17.3
	6'	26.5	23.2	20.6	18.5	16.7	15.2	14.0
	7'	17.7	15.4	13.6	12.1	10.9	-	-
	8'	10.9	-	-	-	-	-	-
6"	5'	32.1	28.2	25.1	22.6	20.4	18.6	17.1
	6'	26.3	23.0	20.4	18.3	16.5	15.0	13.8
	7'	19.4	16.9	14.9	13.3	12.0	10.8	-
	8'	12.0	10.4	-	-	-	-	-

- \*4" flange (3/16" thick), 2" web (5/16" thick) supplied by Metl-Span
- All panels are CF-42 or CF-45, mesa/mesa, 26 gauge steel both faces.  
Deflection limited to L/180  
Safety factor against panel buckling = 2.5  
Safety factor against foam shear failure = 3.0  
Safety factor against hanger connection failure = 3.0
- Important note:* The strength of hanger rod, couplings, connection to structural steel and capacity of roof support members must be checked to insure that they are capable of transferring the load to the roof steel with adequate safety factor.
- Maximum tee cantilever = 2'-6"
- Contact Metl-Span for allowable panel mid-span live load.
- The above allowable design loads are live loads in addition to panel dead loads.

117 Hillside Drive, Lewisville, Texas 75057  
877.585.9969 • FAX: 972.420.9382 • EMAIL: panel@metlspan.com

**METLSPAN.COM**

